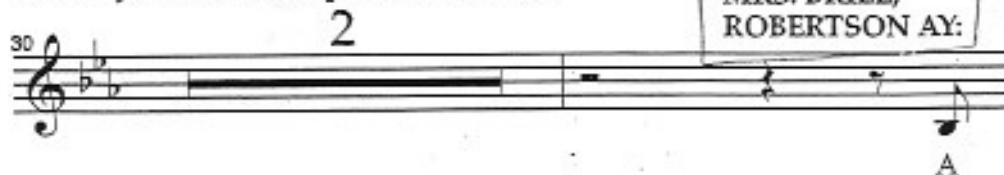


# CHERRY TREE LANE (Pt 1)

(GEORGE:) Coat! (GEORGE holds his arms out as MRS. BRILL helps him into his coat.) Winifred, you've engaged six nannies in the last four months, and they've all been unqualified disasters!

GEORGE,  
MRS. BRILL,  
ROBERTSON AY:

callback  
start



GEORGE,  
MRS. BRILL,  
ROBERTSON AY:



nan-ny's a stal-wart Our child-ren would gain By



hav-ing such a nan-ny in Cher-ry Tree Lane

*end*

SCRIPT