

SCENE 1: CHERRY TREE LANE, PARLOR

(#2 - CHERRY TREE LANE - PART 1.)

CHERRY TREE LANE (PART 1)

sr
(BERT exits. KATIE NANNA storms toward the door with her packed bags, almost bowling over MRS. BRILL, the cook/housekeeper, and ROBERTSON AY, the houseboy.)

Presto

(BERT:)

Musical notation for (BERT:) in treble clef, 2/4 time. The first measure contains a circled "100." and the word "end" written below it. The second measure contains a circled "2". There are handwritten scribbles over the first measure.

100. end 2

KATIE NANNA: Those little beasts have run away from me for the last time.

MRS. BRILL: And who gets stuck with the children with no nanny in the house? Me! That's who!

KATIE NANNA: I've said my say, Mrs. Brill. I've done with this house forever!

5

Musical notation for KATIE NANNA's line in treble clef, 2/4 time. The first measure contains a circled "8".

8

MRS. BRILL: Well, good riddance, then. And mind you don't stumble on your way out!

(KATIE NANNA stumbles. WINIFRED BANKS enters.)

WINIFRED: Where is she going? What on earth am I going to say to Mr. Banks?

(GEORGE enters, ready to go to work.)

GEORGE: What is all this commotion?

13

Musical notation for WINIFRED's line in treble clef, 2/4 time. The first measure contains a circled "7".

7

callback start

Steady

(GEORGE:)

21

Musical notation for (GEORGE:) in treble clef, 2/4 time. The first measure contains a circled "21". The melody starts with a circled "mf".

mf


Pre - ci - sion . and or - der That's

22

 all that I ask The run - ning of a house - hold, A

24

 straight - for - ward task. The child - ren, the ser - vants are

26

 all your do - main Whilst I re - main the sov - reign of

28

 Cher - ry Tree Lane.

(GEORGE:) Coat! (GEORGE holds his arms out as MRS. BRILL helps him into his coat.) Winifred, you've engaged six nannies in the last four months, and they've all been unqualified disasters!


GEORGE,
 MRS. BRILL,
 ROBERTSON AY:

30

 A

33

 nan - ny should go - vern A nan - ny should rule A

35

 nan - ny is a pa - ra - gon who suf - fers no fool A

A MAN HAS DREAMS

(MARY POPPINS exits with JANE and MICHAEL as VON HUSSLER enters.)

GEORGE: Mr. Von Hussler, I've considered your arguments, but I'm afraid my answer is no.

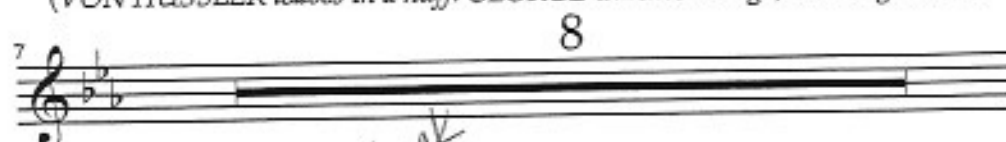
VON HUSSLER: So you don't recognize a good idea?



GEORGE: Perhaps not, but I recognize a good man when I see one.

VON HUSSLER: You will regret this, Herr Banks.

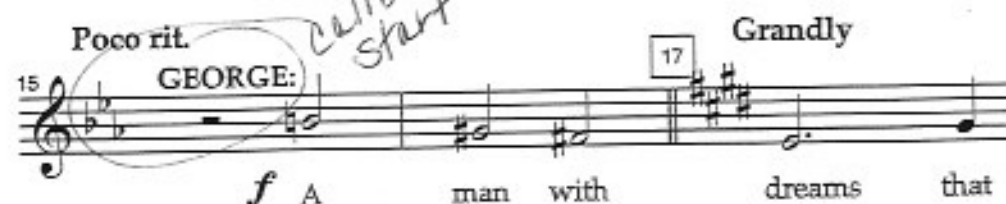
(VON HUSSLER leaves in a huff. GEORGE watches him go, thinking aloud.)



Poco rit. *callback start* Grandly

15 GEORGE: *f* A man with dreams that

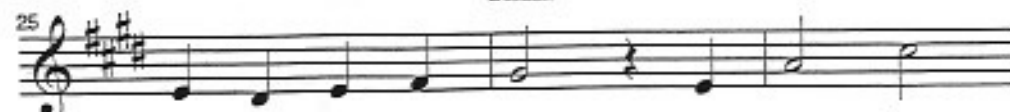
17



18  life has-n't bro-ken, A man with hopes, am-

22  bi-tions to ful - fill, A man you're


Rall.

25  cer - tain, at first glance, De - serves a

(NORTHBROOK enters. GEORGE turns around and extends his hand.)

(GEORGE:) Now, Mr. Northbrook, when exactly could the new factory open?

NORTHBROOK: (shaking GEORGE's hand) Thank you, sir! You won't regret this!

26  chance... 3

end