

THE PERFECT NANNY

(As JANE opens a piece of paper to read from, MICHAEL stands by her side.)

2 **Forcefully** JANE: *callback START*

mf If you want this choice po - si - tion,

Detailed description: A musical staff in treble clef with a key signature of one sharp (F#) and a common time signature (C). The staff contains a melody starting on a whole note G4, followed by quarter notes A4, B4, C5, B4, A4, G4, F#4, E4, D4, C4. The lyrics 'If you want this choice po - si - tion,' are written below the staff. The dynamic marking 'mf' is placed below the first note. Handwritten annotations include '2' above the first measure, 'Forcefully' above the second measure, 'JANE:' above the second measure, and 'callback START' written in a cursive script across the second and third measures.

5

Have a cheer - y dis - po - si - tion. Ros - y cheeks,

Detailed description: A musical staff in treble clef with a key signature of one sharp (F#) and a common time signature (C). The staff contains a melody starting on a quarter note G4, followed by quarter notes A4, B4, C5, B4, A4, G4, F#4, E4, D4, C4. The lyrics 'Have a cheer - y dis - po - si - tion. Ros - y cheeks,' are written below the staff. The measure number '5' is written above the first measure.

MICHAEL: That's the part I put in. (JANE:)

8

No warts. Play games,

Detailed description: A musical staff in treble clef with a key signature of one sharp (F#) and a common time signature (C). The staff contains a melody starting on a quarter note G4, followed by quarter notes A4, B4, C5, B4, A4, G4, F#4, E4, D4, C4. The lyrics 'No warts. Play games,' are written below the staff. The measure number '8' is written above the first measure. The text 'MICHAEL: That's the part I put in. (JANE:)' is written above the staff.

11

all sorts. You must be kind, you must be wit - ty,

Detailed description: A musical staff in treble clef with a key signature of one sharp (F#) and a common time signature (C). The staff contains a melody starting on a quarter note G4, followed by quarter notes A4, B4, C5, B4, A4, G4, F#4, E4, D4, C4. The lyrics 'all sorts. You must be kind, you must be wit - ty,' are written below the staff. The measure number '11' is written above the first measure.

GEORGE: Well, of all the ridiculous—

14


Ver - y sweet and fair - ly pret - ty


Detailed description: A musical staff in treble clef with a key signature of one sharp (F#) and a common time signature (C). The staff contains a melody starting on a quarter note G4, followed by quarter notes A4, B4, C5, B4, A4, G4, F#4, E4, D4, C4. The lyrics 'Ver - y sweet and fair - ly pret - ty' are written below the staff. The measure number '14' is written above the first measure. The text 'GEORGE: Well, of all the ridiculous—' is written above the staff.



WINIFRED: George, please.

17 JANE: 
mf Take us on out - ings, give us treats

20 JANE:  We

MICHAEL: 
f sing songs, bring sweets

Meno Mosso
(JANE:) MICHAEL: 
f won't hide your spec - ta - cles so you can't see Put

end

PRACTICALLY PERFECT

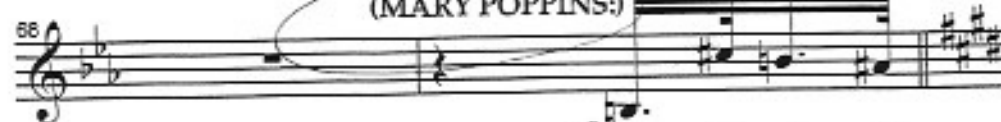
(MARY POPPINS:) I like games. But I choose them. JANE, MICHAEL: That's not fair—



this...

MARY POPPINS: I didn't say I was fair. I said I was...

(MARY POPPINS:)



f prac - ti - cal - ly



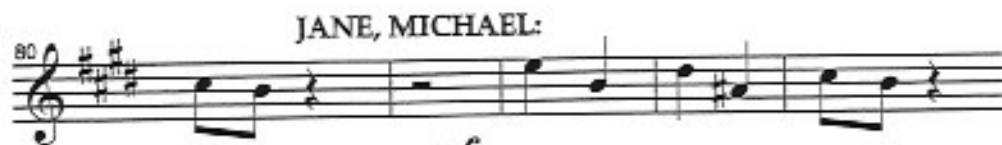
per - fect, _____ and here's my aim:



By the time I leave here you both will be the



same. *mp* You'll be prac - ti - cal - ly



JANE, MICHAEL:
per-fect... *mf* Prac - ti - cal - ly per-fect...

also for JANE & MICHAEL Callback START

SCRIPT

(MARY POPPINS:)

85 *ff* You will be prac - ti - cal - ly

(JANE, MICHAEL:)

ff We will be prac - ti - cal - ly

Poco più mosso

88 per - fect in ev - 'ry way! _____

per - fect in ev - 'ry way! _____

92 _____

end

MARY POPPINS

Best foot forward. Spit-spot.

(#9 - PRACTICALLY PERFECT - PLAYOFF.)

JOLLY HOLIDAY

CALLBACK
Start

Poco più mosso

JANE, MICHAEL:

on SL bench

32

mp Bor - ing just like oth - er nan - nies

(BERT and MARY POPPINS exit. JANE and MICHAEL lag behind until they are alone near a statue of NELEUS on a plinth.)

34

Think - ing parks are good for us

36

It's just sta - tues, ducks, and gran - nies



38 I don't un-der-stand all the fuss

JANE:
40 Is she do-ing it to spite us?

MICHAEL: JANE:
42 We could lose her for a lark! *mf* Per-

MICHAEL:
44 haps it's all a plot I'll tell you what She

JANE, MICHAEL:
46 seems so diff-erent but I bet she's not

(A creaking sound is heard.)
48 *mp* There is noth-ing to ex-cite us In

(The creaking sound grows louder and more confident.)
51 The Park
JANE: What was that?